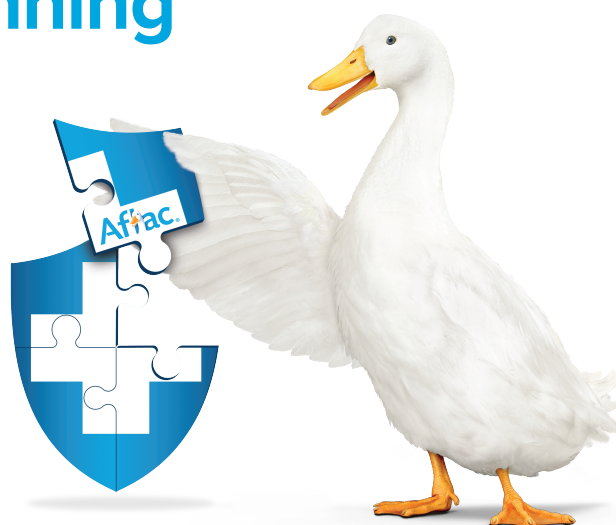


Open enrollment planning isn't complete until you have Aflac

Who hasn't been blindsided by an unexpected medical bill? That's why there's Aflac. Aflac can help take care of expenses health insurance doesn't cover, so you can care about everything else.



Accident



Aflac Plus Rider



Cancer/specified disease



Critical illness



Dental



Hospital confinement indemnity



Juvenile term life



Lump-sum critical illness or cancer



Short-term disability



Term life



Vision

RACHAEL HICKOK
5188586430
rachael_hickok@us.aflac.com



Accident: In Idaho, Policies A36100ID-A36400ID, & A3630FID. In Oklahoma, Policies A36100OK-A36400OK, & A3630FOK. In Virginia, Policies A35100VA-A35400VA, A35B24VA and A35B0FVA. Aflac Plus Rider: In Oklahoma, Riders CIRIDEROK, CIRIDERHOK. This rider is not available in Idaho or Virginia. Cancer/Specified-Disease: In Idaho, Policies B70100ID, B70200ID, B70300ID, B7010EPID, B7020EPID. In Oklahoma, Policies B70100OK, B70200OK, B70300OK, B7010EPK, B7020EPK. In Virginia, policies A75100VA-A75300VA. Critical Illness: In Idaho, Policies A74100ID - A74300ID. In Oklahoma, Policies A74100OK - A74300OK. In Virginia, Policies A74100VA - A74300VA. Dental: In Idaho, Policies A82100RID - A82400RID. In Oklahoma, Policies A82100ROK-A82400ROK. In Virginia, Policies A82100RVA - A82400RVA. Hospital Confinement Indemnity: In Idaho, Policies B40100ID & B4010HID. In Oklahoma, Policies B40100OK & B4010HOK. In Virginia, Policies A49100VAR-A49400VAR & A4910HVAR. Short-Term Disability: In Idaho, Policy A57600IDR. In Oklahoma, Policies A57600OK & A57600LBOK. In Virginia, Policies A57600VA & A57600LBVA. Juvenile Life: In Idaho, Oklahoma, & Virginia, Policies ICC0965JTO and ICC0965JWO. Lump Sum Critical Illness: In Idaho, Policies A73100ID and A7310HID. In Oklahoma, Policies A73100OK and A7310HOK. In Virginia, Policy A73100VA. Lump Sum Cancer: In Idaho, Policy A72200ID. In Oklahoma, Policy A72200OK. In Virginia, Policy A72200VA. Term Life: In Arkansas, Idaho, Oklahoma, and Virginia, Policies: ICC1368200, ICC1368300, ICC1368400; or Policies: ICC18B60200, ICC18B60300 & ICC18B60400. Vision: In Idaho, Policy VSN100ID. In Oklahoma, Policy VSN100OKR. In Virginia, Policy VSN100VA. This is a brief product overview only. Coverage may not be available in all states, including but not limited to ID, NJ, NM, NY or VA. Policies have limitations, exclusions, and/or waiting periods that may affect benefits payable. For costs and complete details of the coverage, please contact your local Aflac agent. Coverage is underwritten by Aflac. In New York, coverage is underwritten by Aflac New York. Aflac WWHQ | 1932 Wynnton Road Columbus, GA 31999.